

C9027

## MORE MONITORS. MORE PRODUCTIVITY.

As technology quickly evolves, displays are coming in more shapes and sizes than ever before. And employees are using more of them. With Plurio's bar-over-bar enhancement, users can easily control up to six displays in a variety of monitor and laptop configurations, giving them the ability to maximise display usage, increase personal comfort and enhance productivity.



# 63%

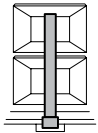
The amount productivity can improve by increasing a worker's monitor space.

*Hewlett Packard Development Company, L.P. and Microsoft Research*

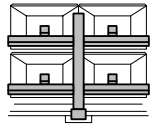
C9028

Five monitor bar-over-bar configuration on a 66 cm column.

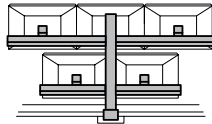
## STATEMENT OF LINE



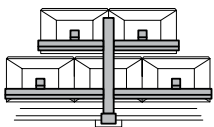
Bar-over-bar (1 over 1)



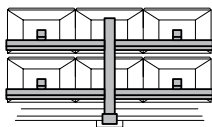
Bar-over-bar (2 over 2)



Bar-over-bar (3 over 2)



Bar-over-bar (2 over 3)



Bar-over-bar (3 over 3)

Use with c-clamp through desk and FrameOne (integrated rail) worksurfaces.

## SURFACE MATERIALS

■ Platinum

Colour is representative and may vary slightly from actual material.

## SUSTAINABILITY

Designed by Steelcase, Plurio is manufactured in the USA for the EMEA (Europe, Middle East and Africa) market. Sustainability actions and results are annually communicated in the annual Steelcase Corporate Responsibility report.

Plurio is theoretically 99% recyclable.

**EPD** EPD - Environmental Product Declaration

Visit [steelcase.com](http://steelcase.com) to discover more about Steelcase's unique ecodesign strategy.

# Steelcase

Visit [steelcase.com](http://steelcase.com)

facebook.com

twitter.com

youtube.com/steelcasetv

Watch a video about Plurio multiple displays support.  
[www.steelcase.com/plurio/animation](http://www.steelcase.com/plurio/animation)