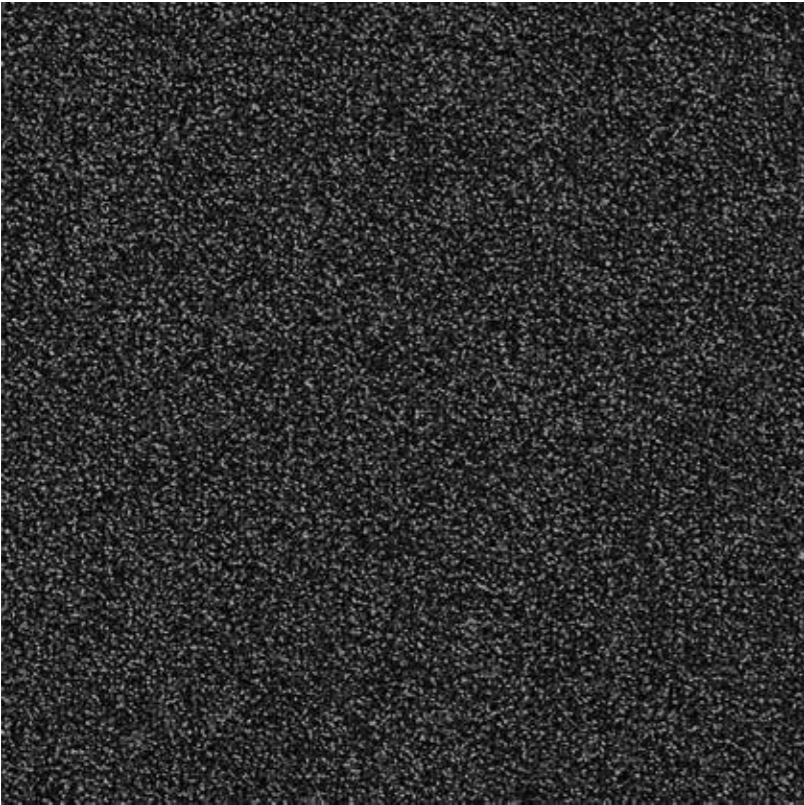
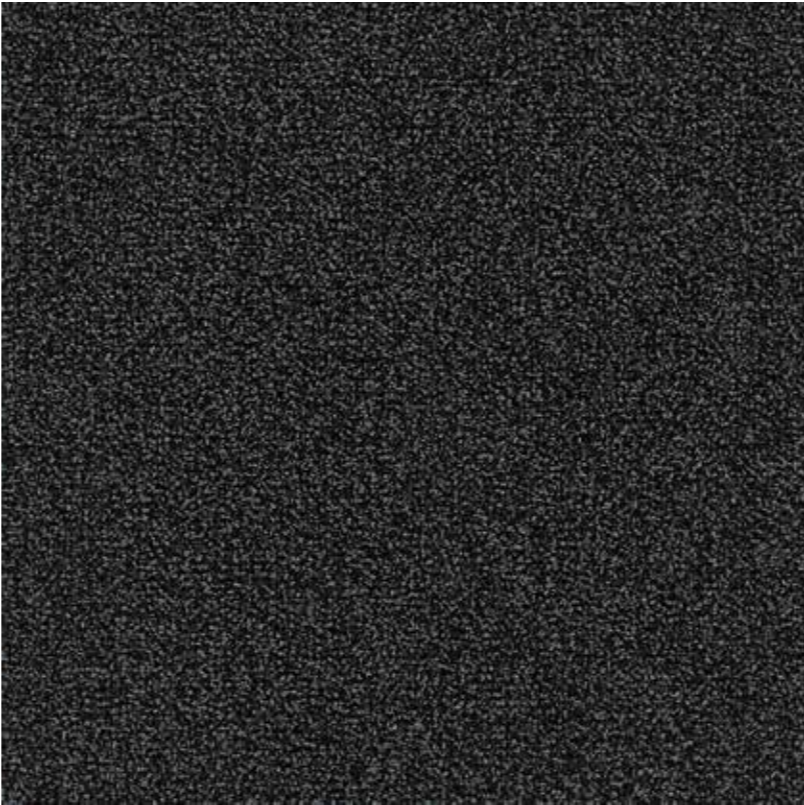


Barricade Two



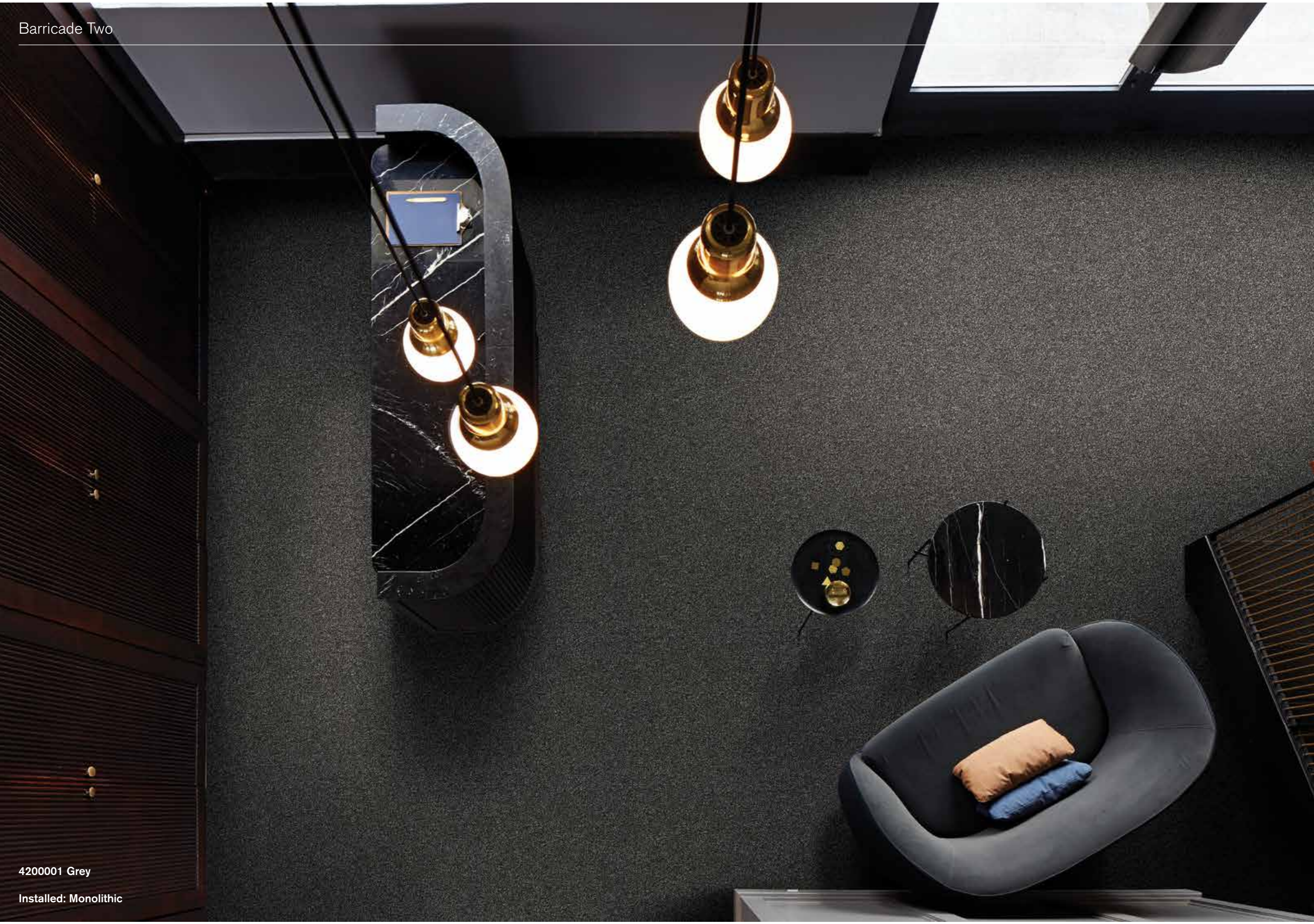
4200001 Grey

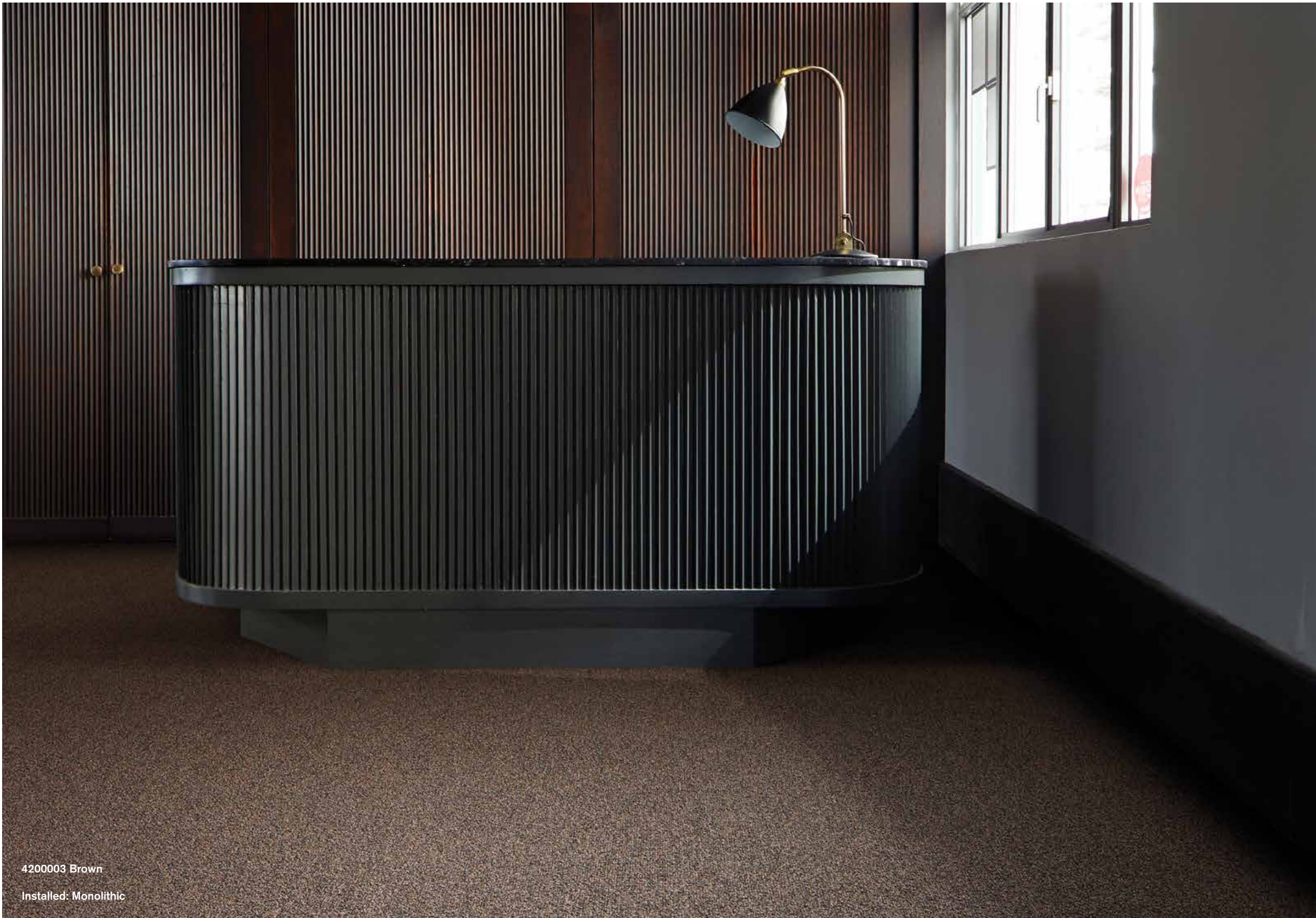


4200002 Anthrazite



4200003 Brown






4200003 Brown

Installed: Monolithic




Product Definition	Tufted Textured Loop Tile
Konstruktion	Getuftete texturierte Schlingenqualität
Descripción	Moqueta modular tufting bucle estructurado
Description	Dalle tuftée structure
Type	Getufte getextureerde bouclé
Descrizione	Bouclè tufted a grosso riccio
Pile Material	100% Recycled Solution Dyed Nylon
Polfasermaterial	100% recyceltes Polyamid garngefärbt
Composición Fibra	100% Poliamida reciclada tintada en masa
Composition	100% Polyamide recyclé teint masse
Poolmateriaal	100% Solution Dyed Gerecycled Polyamide
Fibra	100% Poliammide tinta in massa riciclata
Pile Yarn Weight / Poleinsatzgewicht / Peso Fibra / Poids de fibre / Poolinzetgewicht / Peso Felpa	726 g/m ² ± 5%
Total Weight / Gesamtgewicht / Peso Total / Poids total / Totaalgewicht / Peso Totale	4544 g/m ² ± 5%
Pile Height / Polschichtdicke / Altura Fibra / Hauteur de la fibre / Poolhoogte / Altezza Felpa	3,6 mm ± 0,3 mm
Total Thickness / Gesamtdicke / Espesor Total / Epaisseur totale / Totale dikte / Altezza Totale	7,1 mm ± 0,3 mm
Gauge/Ends 10 cm / Teilung x 10 cm / Galga x10 cm / Jauge-Rangs par 10 cm / Rijen per 10 cm / Serraggio x 10 cm	5/32 – 25,2
Tufts per m² / Noppenzahl/m ² / Puntadas m ² / Densité du tuft par m ² / Aantal noppen per m ² / Densità Punti	100.800 ± 5%
Backing Type / Rückenkonstruktion / Soporte / Sous-couche / Ruguitvoering / Sottofondo	Graphlex®
Wear Classification / Beanspruchungsklasse / Clasificación al tráfico / Classement d'usage et de confort / Gebruiksintensiteit / Resistenza all'usura	Contract General (EN 1307:32) Class 32 / LC2
Radiant Panel / Schwerentflammbarkeit / Clasificación Al Fuego / Classement feu / De Radiant Panel Test / Valutazione delle proprietà ignifughe	(EN ISO 9239-1) Euroclass Cfl s1 (EN 13501-1)
Dimensional Stability / Dimensionsstabilität / Estabilidad Dimensional / Stabilité dimensionnelle / Dimensioneale stabilitèit / Test Stabilità dimensionale	≤ 0,2% (EN 986)









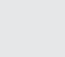
Style 4200 4m² - 16 tiles per box (50 x 50 cm ± 0,2%)

EN 14041



DOP: 1037/121937
textile floor covering
EN 1307

Interface European Manufacturing BV reserve the right to change or modify specifications.

Interface European Manufacturing BV behält sich das Recht vor, Produktspezifikationen zu ändern oder entsprechend anzupassen.

Interface European Manufacturing BV se reserva el derecho a modificar las especificaciones arriba referenciadas.

Interface European Manufacturing BV se réserve la possibilité de modifier les caractéristiques ci-dessus.

Interface European Manufacturing BV behoudt zich het recht voor de specificaties te allen tijde aan te passen.

Interface European Manufacturing BV si riserva il diritto di modificare le proprie specifiche tecniche senza preavviso.

For full environment data, visit:
www.interface.com/eds

Visit our design blog at:
www.designwithpurposeblog.com

Light Values

Product	Colour No	Colour Name	L Value*	Y Value*
Barricade Two	4200001	Grey	24.6	4.3
	4200002	Anthrazite	26.6	5.0
	4200003	Brown	22.2	3.6

* **Light Value:** L Value = L according to CIE L*a*b* colour space, Y Value = Light Reflectance Value according to BS 8493

Lichtreflexionswerte: L-Wert = L gemäß CIE L*a*b* Farbspektrum, Y-Wert = Lichtreflexionswert gemäß British Standard BS 8493

Valores de Reflectancia de Luz: Valor L = L según CIE L*a*b* espacio de color, Valor Y = Valor de reflectancia de luz según el estándar británico BS 8493

Valeurs concernant la lumière: Valeur L = L faisant référence à la méthode CIE L*a*b* pour la couleur, Valeur Y = Valeurs de réflectance de la lumière selon le British Standard BS 8493

Licht waarden: L Waarde = L volgens CIE L*a*b*kleurruimte, Y Waarde = Licht Reflectie Waarde volgens BS 8493

Indici di riflettanza alla luce: Indice L = L secondo CIE L*a*b* colour space, Indice Y = Indice di riflettanza alla luce secondo la norma BS 8493

Environmental Data Sheet

Construction			
Yarn system	100% Recycled Solution Dyed Nylon		
Backing system	Graphlex®		
Recycled Content	Total	Pre Consumer	Post Consumer
Yarn average	100,00%	50,00%	50,00%
Product average	74,18%	66,30%	7,88%
Recycled content can be subject to differences between colours. See details for individual colours on next page.			
Carbon Footprint			
Global Warming Potential (kgs CO2 equivalents/sq meter)			
Full life-cycle carbon footprint (following our EPD results or EPD calculation method)	Raw materials and Production:	7.78 kg CO ₂ eq./m ²	
	Delivery and installation:	0.70 kg CO ₂ eq./m ²	
	Use (10 years):	2.92 kg CO ₂ eq./m ²	
	End of life (waste to energy):	8.57 kg CO ₂ eq./m ²	
	TOTAL (10 years' lifetime):	19.97 kg CO ₂ eq./m ²	
CO ₂ compensation	Carbon neutral Cool Carpet® is standard		
Manufacturing			
Location	Scherpenzeel, NL Factory is certified ISO 14001 since 1996 and ISO 9001 since 1990		
Installation Impacts			
TacTiles™	Optimised for glue-free installation with TacTiles™ connectors with virtually zero VOCs		
Installation Waste	In a typical installation* using the installation method below:		
	Monolithic - 3-4% installation waste		
	For reference: 2 metre wide broadloom typically generates 7-10 % installation waste		
* In a rectangular building, installed before walls.			
End-of-life			
Alternatives to landfill	Reuse: Can be cleaned and reused in a non-critical location to extend its useful life		
	Recycling: Can be returned through the Interface ReEntry scheme and be re-used as raw material in new carpet tiles		
Waste-to-Energy: Can be incinerated in appropriate waste to energy plant			
Indoor Air Quality			
GUT (Gemeinschaft umweltfreundlicher Teppichboden)	The product passes all requirements of GUT's testing criteria regarding hazardous substances, emissions and odour. GUT PRODIS certificate n°A0FEC6D0		
CRI (Carpet & Rug Institute)	Compliant to LEED IQ 4.3 credit (tested in Eurofins to the equivalent test of the CRI Green Label Plus)		
Compliance to Green Building Schemes			
See next page to check how our products contribute to the main green building certification schemes (BREEAM, LEED, HQE and DGNB)			
Type III Environmental Product Declaration			
EPD according to ISO 14025	This product is covered by the Environmental Product Declaration EPD-IFF-20120019-CBD1-EN		

Colourway	Total Recycled Content	Pre consumer recycled content	Post consumer recycled content	Total yarn recycled content	Yarn pre-consumer	Yarn post-consumer
4200001 GREY	74,18%	66,30%	50,00%	100,00%	50,00%	50,00%
4200002 ANTHRAZITE	74,18%	66,30%	50,00%	100,00%	50,00%	50,00%
4200003 BROWN	74,18%	66,30%	50,00%	100,00%	50,00%	50,00%

Compliance to Green Building Schemes	
BREEAM (UK + inter)	<p>BRE Green Guide Ratings:</p> <ul style="list-style-type: none"> Office - Not Available Education - Not Available Health Care - Not Available Retail (by fashion) - Not Available <p>Potential contribution to following categories and credits:</p> <ul style="list-style-type: none"> Hea 02 - Indoor air quality – minimising sources of air pollution Hea 05 - Acoustic Performance Mat 01 - Life Cycle Impacts Mat 05 - Designing for robustness Wst 01 - Construction Waste Management
LEED 2009 US	<p>Potential direct or indirect contribution to following categories and credits:</p> <ul style="list-style-type: none"> Indoor Environmental Quality <ul style="list-style-type: none"> Credit 4.1 Low Emitting Materials: Adhesive & Sealants Credit 4.3 Low Emitting Materials: Carpet Systems Materials and Resources <ul style="list-style-type: none"> Credit 2.1 Construction Waste Management Credit 4.1 Recycled content Credit 5.1 Regional Materials Innovation and Design <ul style="list-style-type: none"> Credits 1-4 1 Pilot Credit 43, Certified Products
HQE (FR)	<p>Potential direct or indirect contribution to several points within following targets:</p> <p>Contribution potentielle directe ou indirecte aux cibles suivantes :</p> <ol style="list-style-type: none"> 2. Integrated choice of products and construction materials / Choix intégré des procédés et produits de construction 3. Low site nuisance / Chantiers à faibles nuisances 9. Acoustic comfort / Confort acoustique 10. Visual comfort / Confort visuel 11. No unpleasant smells / Confort olfactif 12. Sanitary quality of areas / Qualité sanitaire des espaces 13. Sanitary air quality / Qualité sanitaire de l'air
DGNB (D)	<p>Potential direct or indirect contribution of textile flooring to the DGNB scheme "new office and administrative buildings 2012 (NBV12)"</p> <p>Einflüsse textiler Bodenbelag im DGNB-System für das Nutzungsprofil Neubau Büro- und Verwaltungsgebäude 2012 (NBV12)</p> <p>Environmental Quality / Ökologische Qualität (ENV)</p> <ul style="list-style-type: none"> ENV1.1 Life-cycle Assessment - Ecological footprint of the physical building components / Ökobilanz - Emissionsbedingte Umweltwirkungen ENV2.1 Life-cycle Assessment - Primary energy demand / Ökobilanz - Primärenergie <p>Sociocultural and Functional Quality / Soziokulturelle und funktionale Qualität (SOC) /</p> <ul style="list-style-type: none"> SOC 1.2 Indoor air quality / Innenraumluftqualität SOC 1.3 Acoustic comfort / Akustischer Komfort / SOC 1.7 Safety and security / Sicherheit und Störfallrisiken <p>Technical Quality / Technische Qualität (TEC)</p> <ul style="list-style-type: none"> TEC 1.2 Noise protection / Schallschutz TEC 1.5 Ease of Cleaning and Maintenance / Reinigungs- und Instandhaltungsfreundlichkeit des Baukörpers TEC 1.6 Ease of dismantling and recycling / Rückbau- und Demontagefreundlichkeit <p>Process Quality / Prozessqualität (PRO)</p> <ul style="list-style-type: none"> PRO 1.3 Comprehensive project definition / Nachweis der Optimierung und Komplexität der Herangehensweise in der Planung PRO 1.5 Comprehensive building design / Schaffung von Voraussetzungen für eine optimale Nutzung und Bewirtschaftung



TacTiles™

- A smarter, more sustainable way to install carpet tiles
- No need for liquid adhesives
- Fitting tiles is quick, clean and easy and the process virtually eliminates emissions
- No damage to sub floors, and nothing to stop you lifting or moving the carpet whenever you want



Entrance Matting

Incredibly tough, hard-wearing and practical; indoor entrance matting acts as the first line of defence to any interior by removing almost 100% of dirt, rain and mud before it's walked into your flooring.

Both of the products in our commercial entrance matting range – Barricade and Foyer – are resilient, functional, easy to maintain and stylish. And it's for these reasons that our barrier matting forms an essential part of any maintenance programme needed to keep your floorcovering looking its very best.