



Comparison of Different Panel

Performance	Steel cement panel	Steel hollow panel	Woodcore panel	Calcium Sulphate panel	Die-casting aluminum panel	Aluminum honeycomb anti-static panel	
Ultimate load	A	B	C	D	E	D	
Safety factor	A	B	C	D	E	D	
Overload protection	A	B	C	D	E	D	
Fire rating	A	B	E	A	E	A	
Panel size	B	B	B	B	A	B	
Panel weight(bare feish)	C	A	A	E	A	A	
Bare panel sound insulation	C	C	B	A	E	A	
Walking feeling	A	B	A	A	B	A	
Recycled content	B	B	D	A	E	A	
*Support for Green building certificate*	B	B	D	A	E	A	
Cost efficiency	A	A	A	B	E	B	
Cutting ease and cost.	B	A	A	E	C	D	
Application	Office	A	B	A	E	A	
	Data center	A	B	D	B	B	
	Education	A	D	A	B	E	B
	Casino	A	E	D	A	B	A
	Industrial cleanroom	B	E	E	E	A	E
	Library	A	C	B	A	E	A

Note:  
 (1)ZTFLOOR has continuous product and product data improvement. It reserves the right to change type design and specifications without notice.  
 (2) 'A' ----Most advantage, 'E' ----Least advantage.  
 (3)The comparison is based on the panels of the same concentrated loading grade.

**ZTFLOOR®**  
**中天机房**

CHANGZHOU WUJIN ZHONGTIAN COMPUTER-ROOM EQUIPMENT CO.,LTD

Address : Weixing Industrial Zone,Henglin Town,213103 Changzhou City, Jiangsu Province, P.R.of China

- ZTFLOOR passes third-part Green Material certificate.,Please ask for details through company sales.
- For more new products,please contact ZTFLOOR sales.  
(2018)

**ACCESS FLOOR SYSTEM**



**ZTFLOOR®**  
**中天机房**

CHANGZHOU WUJIN ZHONGTIAN  
 COMPUTER-ROOM EQUIPMENT CO.,LTD





# CERTIFICATES

As one of the largest access floor manufacturers and exporters in China, every year, ZTFLOOR supplies over 2 million square meters of access floor in commercial office buildings, data centers, educational facilities, the casinos, clean rooms and libraries.

The company is expanding with plant area over 60,000 square meters and 200 staffs. The main products include access floor system, data center products, underfloor air conditioning and underfloor wiring.

ZTFLOOR leverages its 25+ of experience in the industry to provide support to customers by its high efficiency, energy conversation, intelligence and green spaces products.



The company carries out Chinese standard of SJ/T10796-2001 for all products. Other specifications and tests of different standards such as KS, JIS, CISCA, MOB and EN12825 are also available.



# STEEL CEMENTITIOUS PANEL

## ZT50 OA PANEL



### Structure

ZT50 OA panel is made of steel plate, top to be SPCC material, bottom to be ST14 material, after pan formed and joined together by resistance welding, the panel is coated with epoxy paint, then infilled with light cement.



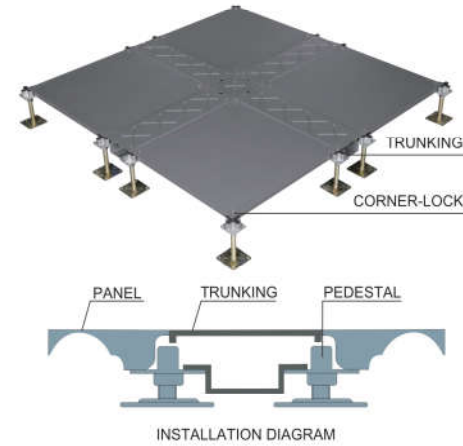
### Product property

Panel weight : 8 ~12kgs/pc  
 ASTM E136-11 and BS476-4: Non combustible  
 ASTM E84-14: Class A  
 EN13501: Class A1  
 ASTM E492-09: IIC58  
 ASTM E283-04 25Pa:  $\leq 0.3L/s \cdot m^2$   
 NIOSH9002: Asbestos-free  
 LEED assessment report available



# STEEL CEMENTITIOUS PANEL

## ZT50 OA PANEL



### Wire Trunking System

A workstation can be easily and quickly relocated with cable management without disruption. Convenient for connecting wire at any point without cutting floor. Suitable for all kinds of plug socket terminals. Adjustable wire-connected location.



ZT50 (front)

ZT50 (back)

ZT50-C2 (front)

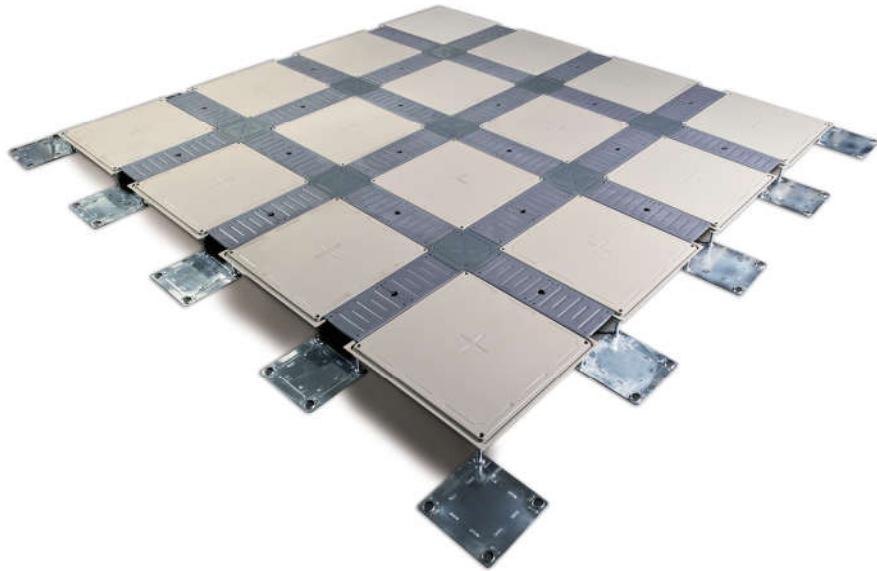
ZT50-C2 (back)

### Specifications

Type	Size	Concentrated	Impact Load	Ultimate Load	Uniform Load	Rolling Load	Standard
International	mm	N	N	N	N/M <sup>2</sup>	10times 10000times	S/J/T 10796-2001
SC688	500 × 500 × 28	≥3000	670	≥9000	≥12500	2200 1500	
SC800	500 × 500 × 28	≥3600	670	≥10800	≥19800	3000 2200	
SC1000	500 × 500 × 28	≥4500	670	≥13500	≥23300	3600 3000	

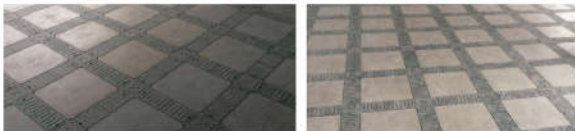
# STEEL CEMENTITIOUS PANEL

## ZT50-B PANEL



### Structure

ZT50-B panel is elevated innovation and breakthrough, comparing with traditional access floor system. The new ZT50-B series has the same advantage of ZT50 panel, but more convenient, environmental protected. Now it is widely used in Japan, Qatar, Bahrain, Korea and other countries.



# STEEL CEMENTITIOUS PANEL

## ZT50-B PANEL



### Product Description

ZT50-B panel is supported by 4 pedestals and flank cap and central cap.

### Feature

- Environmental protected, economical and recyclable.
- Light weight, 1/2 to 2/3 of common access floor.
- Good conductivity and air leakage, flexible trunks for wires and cables.
- Specially designed for low finished flooring height.



### Trunking

Trunking for wires is one of the advantages of ZT trunking floor. Cover flank covers on basic panel edges after lying wires in trunks. Each panel stands separately, making it very convenient to lie flank cover before or after wires.



### Specifications

Type	Size	Concentrated	Impact Load	Ultimate Load	Uniform Load	Rolling Load	Standard
International	mm	N	N	N	N/M <sup>2</sup>	10times 10000times	SJ/T 10796-2001
SC688	500 × 500 × 25	≥3000	670	≥9000	≥12500	2200 1500	
SC800	500 × 500 × 25	≥3600	670	≥10800	≥19800	3000 2200	
SC1000	500 × 500 × 25	≥4500	670	≥13500	≥23300	3600 3000	

# STEEL CEMENTITIOUS PANEL

## ZT60 OA PANEL



### Structure

ZT60 OA panel is made of steel plate, top to be SPCC material, bottom to be ST14 material, after pan formed and joined together by resistance welding, the panel is coated with epoxy paint, then infilled with light cement.



### Product property

Panel weight : 12 ~22kgs/pc  
 ASTM E136-11 and BS476-4: Non combustible  
 ASTM E84-14: Class A  
 EN13501: Class A1  
 ASTM E492-09: IIC58  
 ASTM E283-04 25Pa: ≤0.3L/s · m2  
 NIOSH9002: Asbestos-free  
 LEED assessment report available



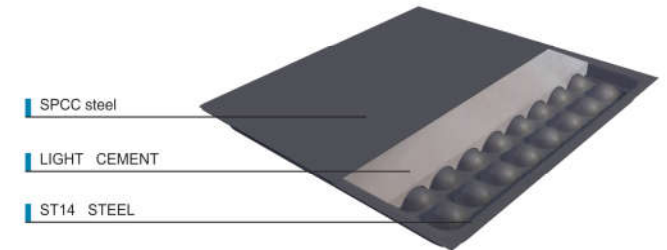
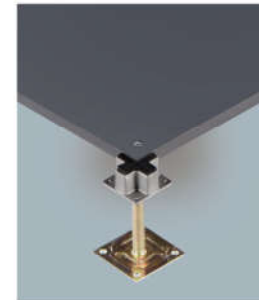
# STEEL CEMENTITIOUS PANEL

## ZT60 OA PANEL



### Structure

- Screw down design supports the system effectively and makes the installation easily and stable.
- The load is transferred directly onto the center of pedestal column.
- Different types of understructures are available for install OA panel system.



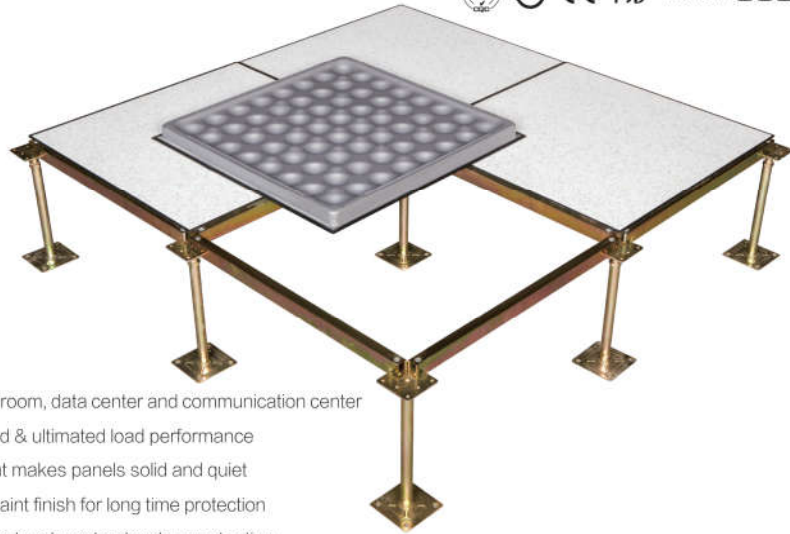
### Specifications

Type	Size	Concentrated	Impact Load	Ultimate Load	Uniform Load	Rolling Load		Standard
International	mm	N	N	N	NM <sup>2</sup>	10times	10000times	
SC668	600 × 600 × 35	≥3000	670	≥9000	≥12500	2200	1500	SJ/T 10796-2001
SC800	600 × 600 × 35	≥3600	670	≥10800	≥19800	3000	2200	
	610 × 610 × 35							
SC1000	600 × 600 × 35	≥4500	670	≥13500	≥23300	3600	3000	
	610 × 610 × 35							
SC1250	600 × 600 × 35	≥5600	670	≥16800	≥33100	4500	3600	
	610 × 610 × 35							
SC1500	600 × 600 × 35	≥6700	670	≥20100	≥42600	5600	4500	
	610 × 610 × 35							
SC2000	600 × 600 × 35	≥8900	780	≥26700	≥49800	6700	5600	
	610 × 610 × 35							
SC2500	600 × 600 × 35	≥11100	780	≥33300	≥58300	8900	6700	
	610 × 610 × 35							
SC3000	600 × 600 × 35	≥13300	880	≥39900	≥66900	11100	8900	
	610 × 610 × 35							



# STEEL CEMENTITIOUS PANEL

## LAMINATE PANEL



### Feature

- Used for computer room, data center and communication center
- Excellent rolling load & ultimated load performance
- Light weight cement makes panels solid and quiet
- Black/grey epoxy paint finish for long time protection
- Class A flame spread and smoke development rating
- Convenient installation supplies an excellent solution for office integrity, wiring and date cable service

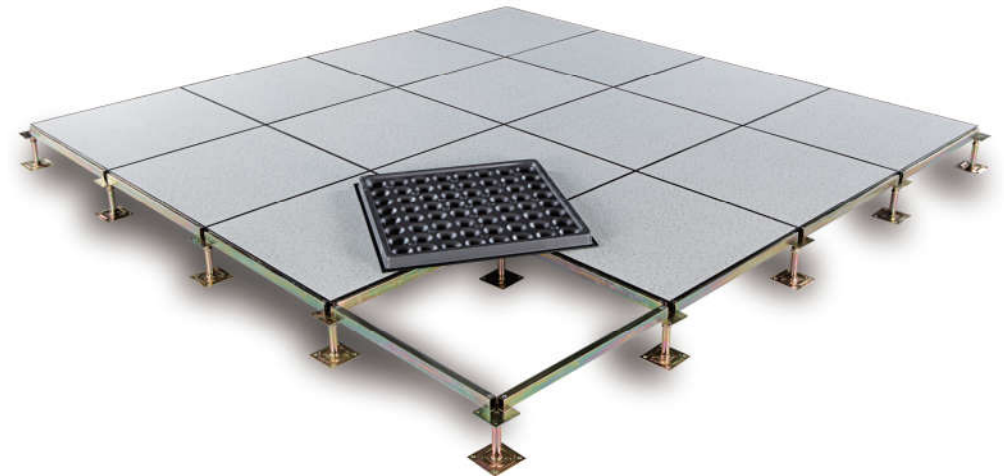
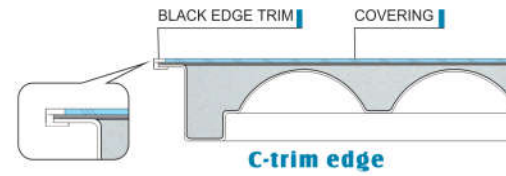
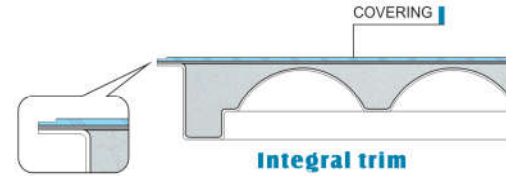
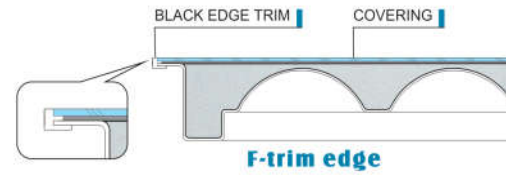
### Wide range finishes available

- High Pressure Laminate
- Conductive vinyl tile
- Ceramic
- Carpet tile
- Linoleum
- Granite/Marble



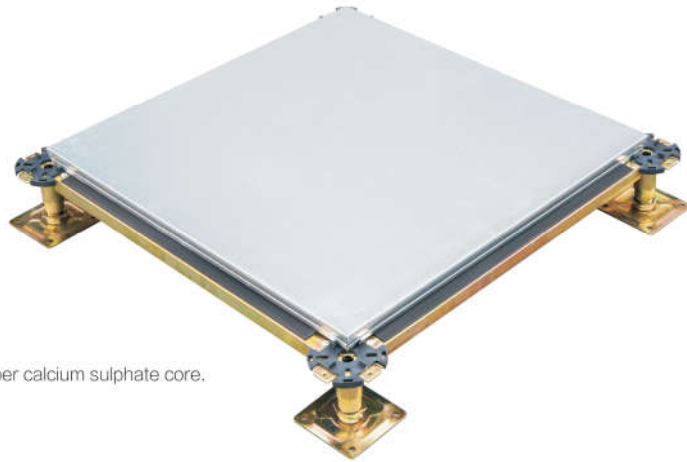
# STEEL CEMENTITIOUS PANEL

## LAMINATE PANEL



# CALCIUM SULPHATE ACCESS FLOOR

## ENCAPSULATED PANEL



### Structure

Encapsulated with high density fiber calcium sulphate core.

### Product property

- Panel weight : 10 ~22kgs/pc
- Panel thickness: 25-40mm
- EN12825 dimension tolerance: 1
- EN13501: Class A1
- EN1366-6 fire rating: 2hours
- ASTM E492-09: IIC55
- ASTM E283-04 25Pa:  $\leq 0.3L/s \cdot m^2$
- NIOSH9002: Asbestos-free
- QBIT 2591-2003: Antibacterial
- LEED assessment report available



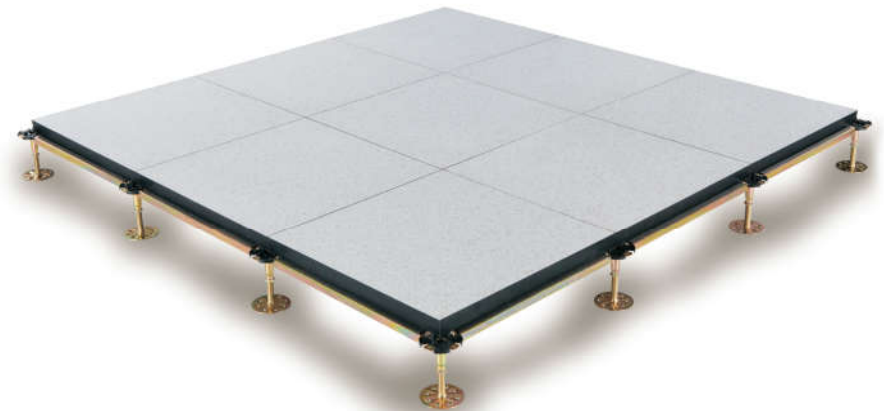
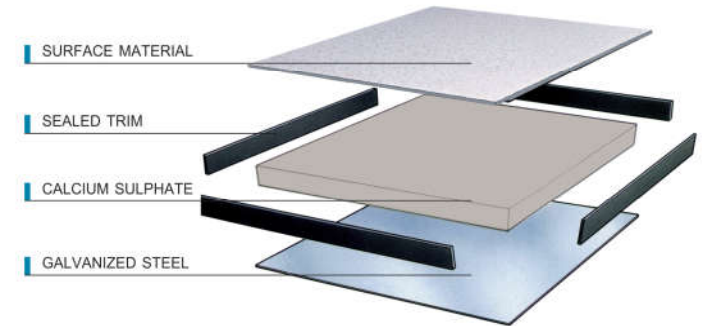
# CALCIUM SULPHATE ACCESS FLOOR

## ABS SEALED PANEL



### Structure

With high density calcium sulphate core, panel surface can be laminated with HPL, conductive PVC, bottom with quality galvanized steel / aluminum foil, four sides with conductive ABS edging.



### Specifications

Type	Size	Concentrated	Impact Load	Ultimate Load	Uniform Load	Rolling Load		Standard
International	mm	N	N	N	N/M <sup>2</sup>	10times	10000times	SJ/T 10796-2001
C1000	500 × 500/600 × 600/610 × 610	≥4500	670	≥13500	≥23300	3600	3000	
C1250	500 × 500/600 × 600/610 × 610	≥5600	670	≥16800	≥33100	4500	3600	

## GRC FLOOR



### Structure

GRC floor uses high quality cement and gypsum powder as main raw materials, combined with reinforcing fiber, not only keep the raw material itself superior fire resistance, more raised the bearing of products. Because the floor did not use a metal material on the surface, the foot feeling is closer to the floor entity and creates a down to earth feel.

GRC floor small size, light weight, not only can be more convenient in the construction, but also reduces the load of the raised floor system to the floor, making the service life of the floor more durable.

GRC floor plate is more light, combined with adjustable height, improves the space utilization of underfloor wiring. Easy installation, high demension accuacy and excellent interchangeability. Recyclable, save resources and protect the environment.



### Specifications

Type	Size	Concentrated	Impact Load	Ultimate Load	Uniform Load	Rolling Load		Standard
International	mm	N	N	N	NM <sup>2</sup>	10times	10000times	SJ/T 10796-2001
GC668	500 x 500 x 26	≥3000	670	≥9000	≥12500	2200	1500	
GC800	500 x 500 x 26	≥3600	670	≥10800	≥19800	3000	2200	
GC1000	500 x 500 x 26	≥4500	670	≥13500	≥23300	3600	3000	

## FRC FLOOR



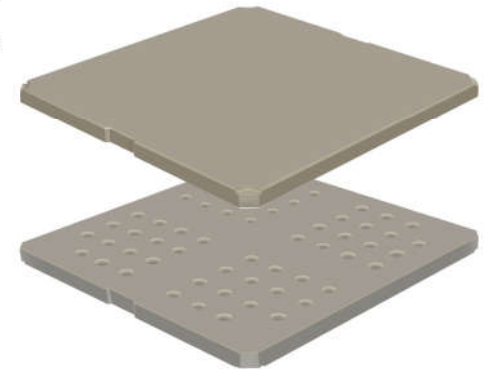
### Structure

FRC access floor is made of silicate, inorganic fiber, mineral fiber, quartz sand, etc, once molded after high pressure.

The panel has no volatile toxic chemicals and radiation, and can be decomposed completely. Its service time is the same as the building.

Each panel has hole for wires, four corners supported by pedestals, with no stringers.

Good flatness and solid feeling. Finishes can be laminate flooring, PVC, carpet, etc.



### Specifications

Type	Size	Concentrated	Impact Load	Ultimate Load	Uniform Load	Rolling Load		Standard
International	mm	N	N	N	NM <sup>2</sup>	10times	10000times	SJ/T 10796-2001
FC668	500 x 500 x 25	≥3000	670	≥9000	≥12500	2200	1500	



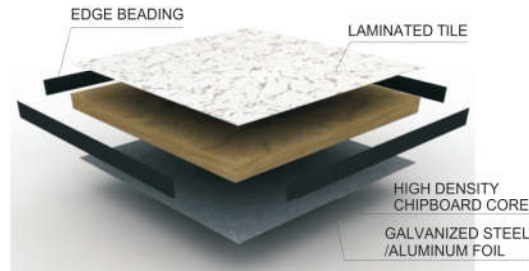
# WOODCORE ACCESS FLOOR

## ABS SEALED PANEL



### Structure

Woodcore access floor consists of high-density (720Kg/m<sup>3</sup>) chipboard. Galvanized steel sheet/aluminum foil is bonded to the bottom of the chipboard. HPL or PVC is stuck to the top of the chipboard, four edges are sealed with ABS edging strip.



### Product property

Panel weight : 5 -15kgs/pc  
Panel thickness: 20-40mm  
EN12825 dimension tolerance: 2  
EN1366-6 fire rating: 15minutes  
EN ISO140-12 sound insulation: 50



### Specifications

Type	Size	Concentrated	Impact Load	Ultimate Load	Uniform Load	Rolling Load		Standard
International	mm	N	N	N	N/M <sup>2</sup>	10times	10000times	SJ/T 10796-2001
W400	500 × 500/600 × 600/610 × 610	≥ 1800	410	≥ 5400	≥ 9800	1200	700	
W668	500 × 500/600 × 600/610 × 610	≥ 3000	670	≥ 9000	≥ 12500	2200	1500	
W800	500 × 500/600 × 600/610 × 610	≥ 3600	670	≥ 10800	≥ 19800	3000	2200	
W1000	500 × 500/600 × 600/610 × 610	≥ 4500	670	≥ 13500	≥ 23300	3600	3000	

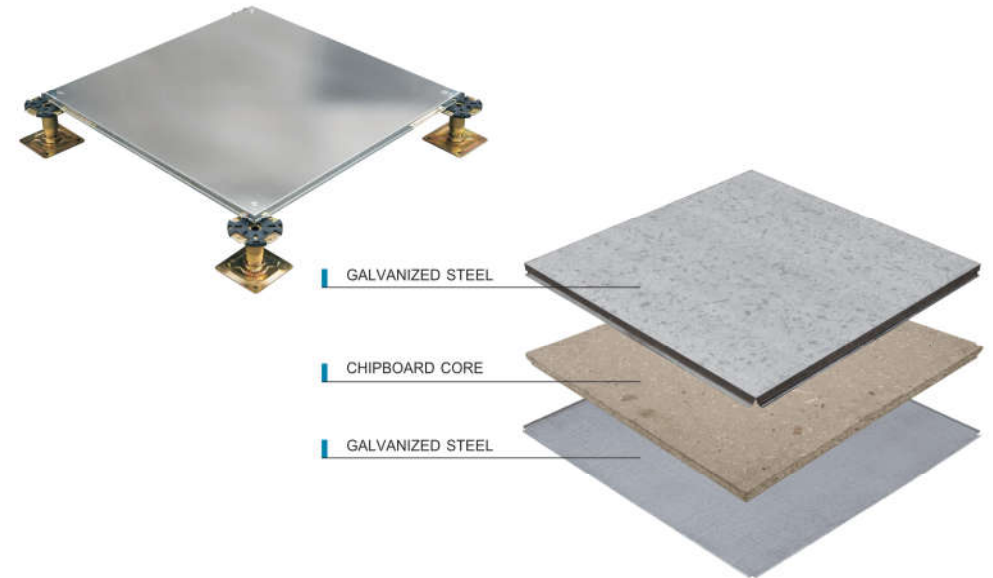
# WOODCORE ACCESS FLOOR

## ENCAPSULATED PANEL



### Structure

Floor panel is encapsulated to provide full steel encasement, steel to be high quality galvanized steel sheet as top and bottom. High density chipboard as the core.



# ALUMINUM ACCESS FLOOR

ISO 9001 CE PSB Intertek SGS



## Feature

Aluminum access floor is die-casting with aluminum ingot which is light and anticorrosion.

Aluminum access floor is widely used in the Data Center and Industrial Clean Room.

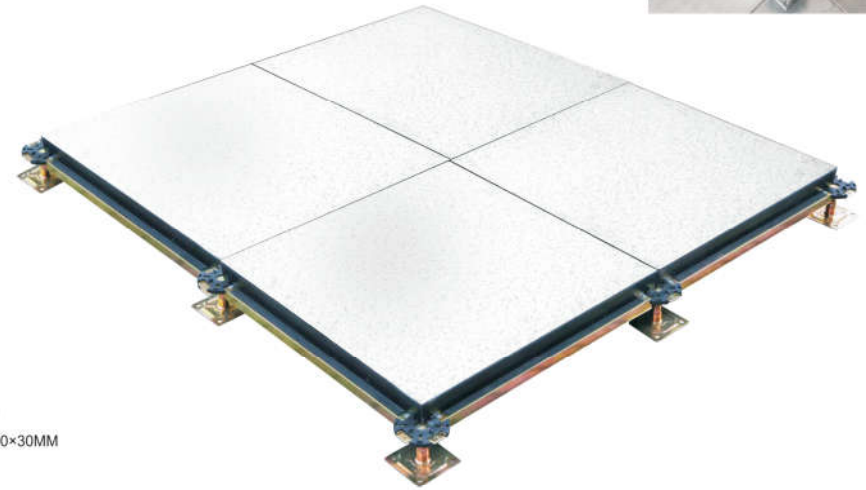
## Specifications

Type	Material	Size	Concentrated	Impact Load	Ultimate Load	Uniform Load	Rolling Load	Standard
		mm	N	N	N	N/M <sup>2</sup>	10times 10000times	
A1250	ADC12	600 × 600	≥5600	670	≥11200	≥33100	4500 3600	SJ/T 10796-2001
A1500	ADC12	600 × 600	≥6700	670	≥13400	≥42600	5600 4500	
A3000	ADC12	600 × 600 610 × 610	≥13300	880	≥26600	≥66900	11100 8900	



# ALUMINUM HONEYCOMB ANTI-STATIC PANEL

ISO 9001 CE PSB Intertek SGS



## Size

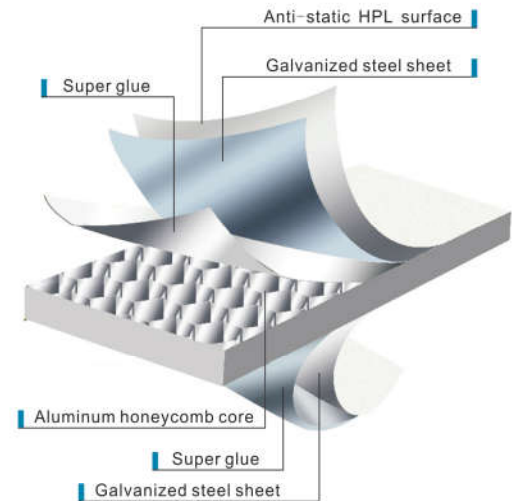
600×600×30MM

## Structure

Aluminum honeycomb anti-static floor is a composite raised movable floor with full metal. Aluminum honeycomb structure is inside. Customers can choose HPL cover according to their need. The edges are fixed with black conductive edge strip.

## Feature

- Light product, flame retardant, sound insulation, heat insulation, moistureproof, anti-corrosive, fire prevention, durable and easy to transport
- Green environmental protection, recyclable, can be used for second time





## FLOORING ACCESSORIES

ISO 9001 CE PSB Intertek SGS

"ZTFLOOR" presents an extensive choices of accessories, including electrical boxes, grommets, panel lifters and air diffuser and so on.



AIR DIFFUSER



ROUND BRUSH GROMMET



SURFACE BRUSH GROMMET



SPLIT INTEGRAL GROMMET



Diameter 15cm

Diameter 19.5cm

ROUND GROMMET



SQUARE GROMMET



INTEGRAL GROMMET



SINGLE/DOUBLE CUP LIFTER



OUTLET BOX B



OUTLET BOX C

## UNDER STRUCTURE

ISO 9001 CE PSB Intertek SGS



STRINGERS

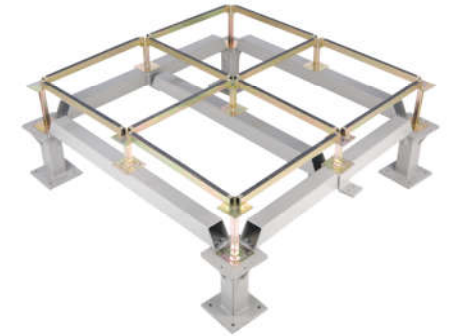


HEAVY DUTY PEDESTAL



C01 C02 C03 C04

CROSS HEAD PEDESTAL



SEISMIC PEDESTAL



F06 F01 F02 F05

FLAT HEAD PEDESTAL



W03 W05 W07 W09

ROUND HEAD PEDESTAL



RAMP PEDESTAL

PEDESTAL BRACING



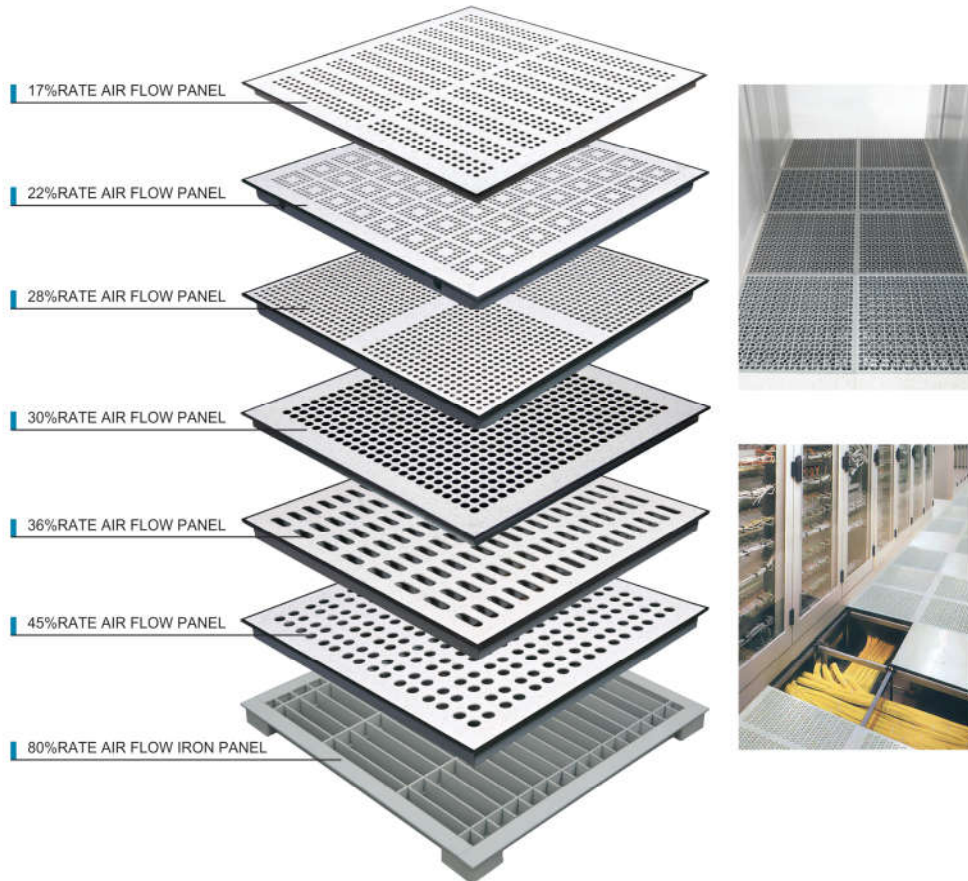
BRACING CLAMP

# AIR FLOW SYSTEM

ISO 9001 CE PSB Intertek SGS

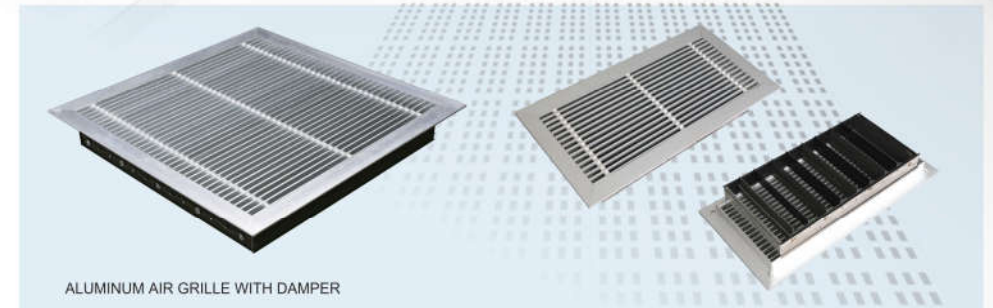
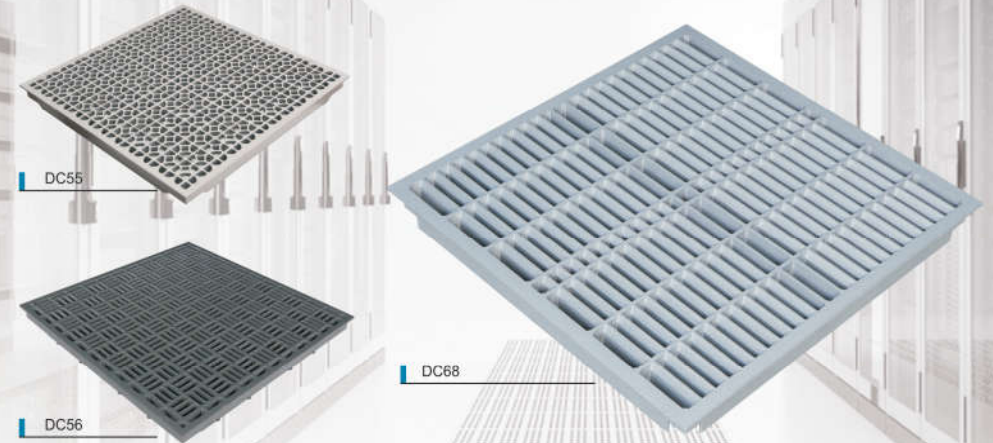
## Feature

Steel perforated panel is specially designed to allow air flow through the access floor up to the equipment.



# AIR FLOW SYSTEM

ISO 9001 CE PSB Intertek SGS



SLIDING DAMPER

ROUND DAMPER

OPPOSED BLADE DAMPER



# COVERING MATERIAL

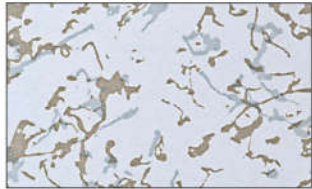




## High Pressure Laminate(HPL)

A Comprehensive selection of ZTFLOOR covering materials are available including more colors of HPL, Vinyl and other interior finishes, to satisfy customer's different requirements.

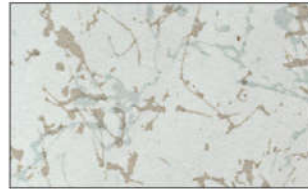
Please contact with us if you want other covering material which is not listed below.



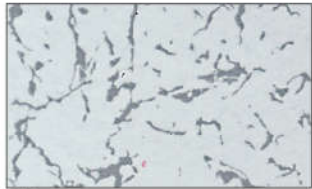
8192



8193



8194



8191



8132



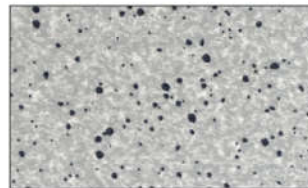
8120



8194-1



8144



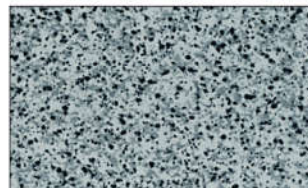
8138



8137

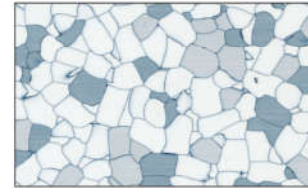


8119

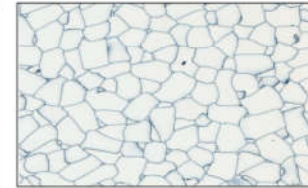


8117

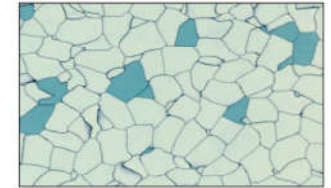
## Conductive Vinyl tile



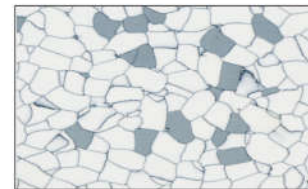
ZT-1101



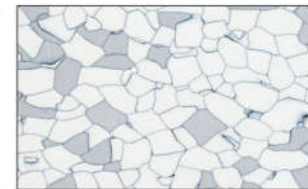
ZT-1103



ZT-02



ZT-04



ZT-909



ZT-9022

## Ceramic tile



5001



5002



5003

## Timber



4801



4802



4803



4804



4805



4806



# PROJECT REFERENCE



**Bosch Shanghai Research Center**  
Place: Shanghai  
Area: 27000m<sup>2</sup>  
Panel Type: Steel cementitious panel



**Shanghai Msd Office Building**  
Place: Shanghai  
Area: 20000m<sup>2</sup>  
Panel Type: Steel cementitious panel



**Beijing BOE operations center**  
Place: Beijing  
Area: 30000m<sup>2</sup>  
Panel Type: Steel cementitious panel



**Dalian Deep Blue Center Building**  
Place: Dalian  
Area: 40000m<sup>2</sup>  
Panel Type: Calcium sulphate panel



**Mobile Data Center in Jilin**  
Place: Jilin  
Area: 10400m<sup>2</sup>  
Panel Type: Calcium sulphate panel



**Xingjiang Lvcheng Plaza**  
Place: Xingjiang  
Area: 50000m<sup>2</sup>  
Panel Type: Calcium sulphate panel



**Shanghai green leaf pharmaceutical**  
Place: Shanghai  
Area: 27000m<sup>2</sup>  
Panel Type: Steel cementitious panel



**Suzhou Guoxing Building**  
Place: Suzhou  
Area: 15000m<sup>2</sup>  
Panel Type: Steel cementitious panel



**Suzhou Nisheng Building**  
Place: Suzhou  
Area: 38000m<sup>2</sup>  
Panel Type: Steel cementitious panel



**Guangzhou Dongfeng Plaza**  
Place: Guangzhou  
Area: 40000m<sup>2</sup>  
Panel Type: Calcium sulphate panel



**Nantong International Data Center Industrial Park**  
Place: Nantong  
Area: 14000m<sup>2</sup>  
Panel Type: Calcium sulphate panel



**China Telecom (Beijing) Office Building**  
Place: Beijing  
Area: 15000m<sup>2</sup>  
Panel Type: SC panel with HPL finish



**Shenyang Friendship Times Square**  
Place: Shenyang  
Area: 20000m<sup>2</sup>  
Panel Type: Steel cementitious panel



**Yancheng Financial City**  
Place: Yancheng  
Area: 14570m<sup>2</sup>  
Panel Type: Steel cementitious panel



**Tianjin Wantong building**  
Place: Tianjin  
Area: 40000m<sup>2</sup>  
Panel Type: Steel cementitious panel



**Nanchang Greenland Center**  
Place: Nanchang  
Area: 20000m<sup>2</sup>  
Panel Type: OA net floor trunking panel



**Kunming rail transit**  
Place: Kunming  
Area: 8000m<sup>2</sup>  
Panel Type: SC panel with HPL finish



**Chongqing rail transit line 5**  
Place: Chongqing  
Area: 12000m<sup>2</sup>  
Panel Type: SC panel with HPL finish